

NTX NEW TRIER EXTENSION

Tom James' January 2025

Art Classes

Register today at www.NTX203.net!



PAM DUFOUR



HOWARD COHEN



VIVIAN KLINGENSMITH



LINDA PRASIL



Gouache, Drawing, and Mixed Media

The open studio class will focus on whatever materials the student selects to use, including markers, colored pencils, and gouache. Gouache is a quick-drying, opaque watercolor that is a wonderful medium for smaller paintings, watercolor paper, and smaller paintings on 140 lb-300 lb watercolor paper. The class will include demos and focus on learning to work with the materials.

Maximum of 12.

Location: Wilmette Community Recreation Center

250-110 | Mondays | 1/6-1/27 | 10 a.m.-12 p.m.

Fee: \$72/ Seniors \$65 | [REGISTER](#) (3 sessions)

No class 1/20



ALYS MANCOFF



CHRISTINE PORTER



***NEW IN-PERSON**

Painting A Day/ Abstract Painting

This is a fun class for the adventurous with lots of interaction and results. The January session will include assignments working with different techniques and materials. We will look at the work of different abstract artists and complete assignments centered around their style of abstract. Each week there will be a class assignment.

Location: Wilmette Community Recreation Center

250-111 | Mondays | 1/6-1/27 | 12:30-2:30 p.m.

Fee: \$72/ Seniors \$65 | [REGISTER](#) (3 sessions)

No class 1/20

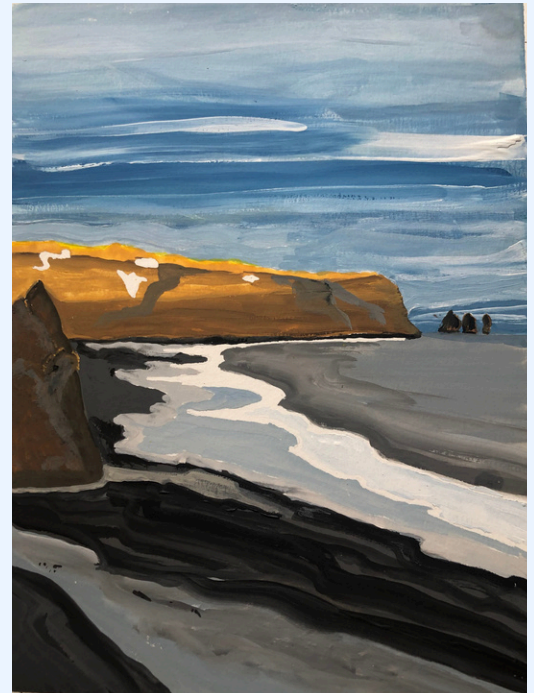


Landscape Perspective

This is a unique course aimed at those who draw or paint the landscape. Each week the instructor will share a landscape photograph and will use annotation tools to discuss the landscape perspective, composition, and approach to the image. For those continuing or needing a refresher course, this class will include YouTube tutorials, demonstrations by the instructor, and discussions about the work submitted by the class. Screenshots of the work will be sent to each student. This is an important class for understanding dimensional drawing/painting.

Location: Live Online via Zoom

250-112 | Tuesdays | 1/7-1/28 | 10-11:15 a.m.
Fee: \$61/ Seniors \$55 | [REGISTER](#) (4 sessions)



MEG KREUSER



Painting: Intermediate/Advanced Studios

These studio class sections are for students who have experience with painting in oils, acrylics, watercolor, or mixed media. Emphasis will be on personal expression and style, be it representational, expressionist, impressionist, or anything else. In these studio classes, the teacher will provide individual attention to further each student's abilities. Prerequisite for all studio classes: previous painting experience. Class limit is 12. Location: Wilmette Community Recreation Center

250-113 | Wednesdays | 1/8-1/29 | 12:30-2:30 p.m.
Fee: \$96/ Seniors \$86 | [REGISTER](#) (4 sessions)

250-114 | Fridays | 1/10-1/31 | 10 a.m.-12 p.m.
Fee: \$96/ Seniors \$86 | [REGISTER](#) (4 sessions)



JOSEPH MCPHILLIPS

The Art History classes emphasize not only the art created by the artists, but also the history and culture of the time. Art is, more often than not, a reflection of the artist and the external/internal life, history, and culture around them. The courses will also highlight how to look at paintings, and discuss composition, themes, and techniques used.



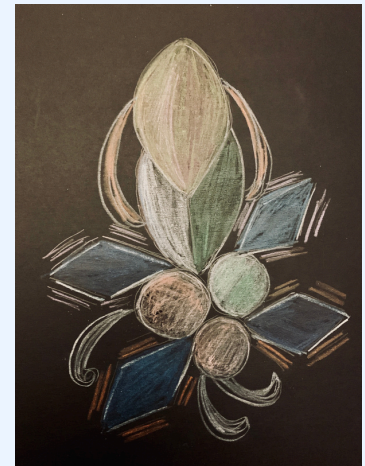
Art History Section II

The January session will focus on a variety of different artists from different periods of art history.

Location: Live Online via Zoom

250-115 | Tuesdays | 1/7-1/28 | 7-8:15 p.m.
FEE: \$61/ Seniors \$55 | [REGISTER](#) (4 sessions)

250-116 | Wednesdays | 1/8-1/29 | 3:15-4:30 p.m.
FEE: \$61/ Seniors \$55 | [REGISTER](#) (4 sessions)



YOLANDA TRUJILLO



CM MURPHY



LOUISE ILLIAN



FAY GOLDBLATT



MAGGIE GLEASON



Representational Painting/Painting Critiques

Each week the class will select images to paint for assignment. Emphasis will be on techniques such as “dry brush,” “wet and wet blends,” and the types of brushes to use. We will be working from a variety of images mostly based on landscapes. The focus will be on “seeing” shapes, composing the painting, detailing, and landscape particulars such as trees, water, clouds, mountains, etc. Each week there will be an assignment given to be discussed the following week using screenshots and annotation from the instructor, in addition to demos and YouTube videos to support the material.

Location: Live Online via Zoom

250-117 | Wednesdays | 1/8-1/29 | 10-11:30 a.m.
FEE: \$72/ Seniors \$65 | [REGISTER](#) (4 sessions)



DIANE MOE

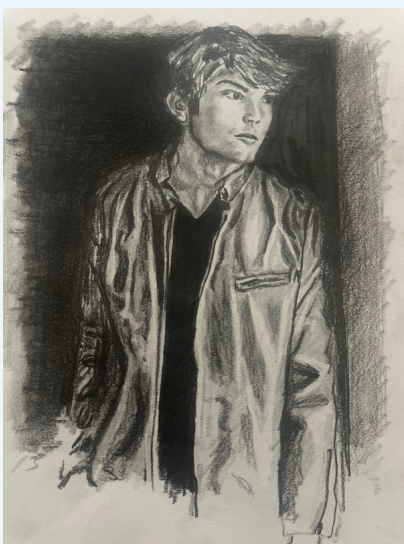


Intermediate Drawing Your Way

This session will focus on drawing faces and figures and learning to develop a style through techniques and materials. A variety of materials will be discussed such as markers, pen and ink, colored pencils, pencil, and gouache. The class will feature YouTube tutorials and demos by the instructor. Each week there will be a class assignment to be discussed the following week. Previous drawing experience required.

Location: Live Online via Zoom

250-118 | Thursdays | 1/9-1/30 | 10-11:30 a.m.
FEE: \$72/ Seniors \$65 | [REGISTER](#) (4 sessions)



KIRA ELERT

NTX NEW TRIER EXTENSION

Join us for a class — there are multiple ways to register



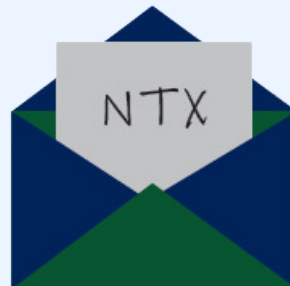
ONLINE:

Visit our website at ntx203.net (or scan the QR code above) to view our digital catalog on your device and register directly through the page.



WALK-IN/PHONE:

Walk-in registration is available during daytime class hours at the Northfield Campus or by appointment only. We are happy to help you register over the phone at (847) 446-6600.



MAIL:

Download our registration form online at ntx203.net and fill out your credit card info (or include a check made out to New Trier Extension) and mail it to NTX at 7 Happ Road, Northfield, IL 60093